

FA02123-EN



RE432M

RE862M

INSTALLATION MANUAL

GENERAL PRECAUTIONS

Installation, programming, commissioning and maintenance must only be carried out by qualified, expert technicians and in full compliance with the applicable law. • Before connecting or disconnecting the board, disconnect the mains power supply. • Only use this product for its intended purpose. Any other use is hazardous. • Came S.p.A. is not liable for any damage caused by improper, erroneous or unreasonable use. • The product, in its original packaging supplied by the manufacturer, must only be transported in a closed environment (railway carriage, containers, closed vehicles). • If the product malfunctions, stop using it and contact customer services at <https://www.came.com/global/en/contact-us> or via the telephone number on the website. • The manufacture date is provided in the production batch printed on the product label. If necessary, contact us at <https://www.came.com/global/en/contact-us>.

The general conditions of sale are given in the official CAME price lists.

Dismantling and disposal

Control boards, like other components such as transmitter batteries, may contain pollutants. These must be removed and taken to a local collection centre or an authorised waste disposal and recycling firm. It is always advisable to check the specific laws that apply in your area. DISPOSE OF THE PRODUCT RESPONSIBLY.

THE DATA AND INFORMATION IN THIS MANUAL MAY BE CHANGED AT ANY TIME AND WITHOUT NOTICE.

MEASUREMENTS ARE IN MILLIMETRES, UNLESS STATED OTHERWISE.

Legislative references

This product complies with the applicable standards in force at the time of manufacturing.

CAME S.p.A. declares that the product described in this manual complies with Directive 2014/53/EU and the Radio Equipment Regulations 2017. • The full EC declaration of conformity and UK Conformity Assessed (UKCA) marking information can be found at www.came.com.

PRODUCT DATA AND INFORMATION

Description

001RE432M

Two-channel 433.92 MHz external receiver, 12-24 V AC - DC, for storing up to 250 users.

001RE862M

Two-channel 868.35 MHz external receiver, 12-24 V AC - DC, for storing up to 250 users

Description of parts

- ❶ Alert LED
- ❷ Channel button 1 (OUT1)
- ❸ Channel button 2 (OUT2)
- ❹ CLEAR button
- ❺ OUT2 warning LED
- ❻ Terminal board for electrical connections
- ❼ Memory Roll card connector
- ❽ Voltage LED
- ❾ DIP-switch for power supply / OUT2 command type
- ❿ OUT1 warning LED
- ⓫ Memory roll card

LED status key

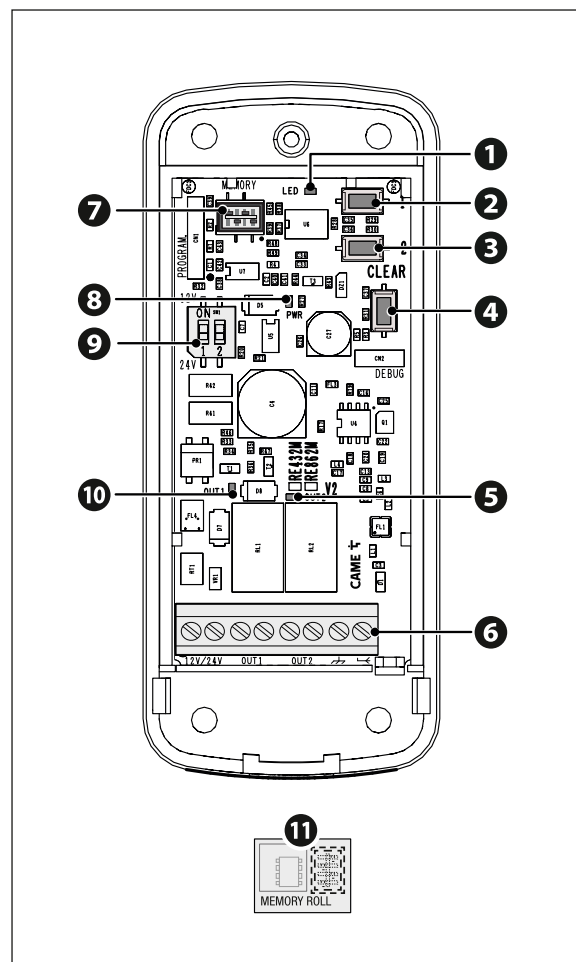
LED	On	Off
Voltage LED ❽	voltage present	no voltage
OUT1 LED ❿	OUT1 output with closed contact	OUT1 output with open contact
OUT2 LED ❺	OUT2 output with closed contact	OUT2 output with open contact

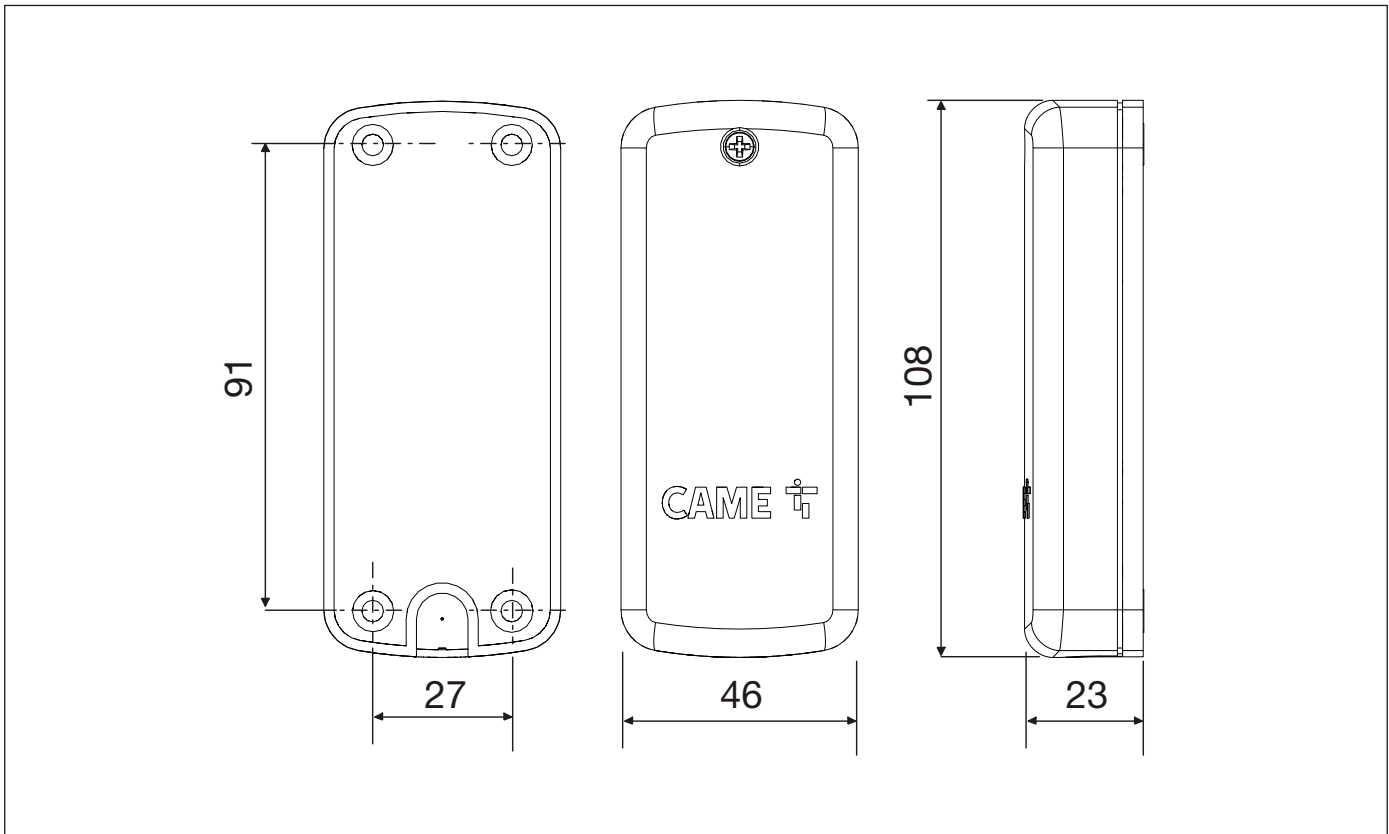
Technical data

MODELS	RE432M	RE862M
Power supply (V - 50/60 Hz)	12 - 24 AC - DC	12 - 24 AC - DC
Maximum absorption (mA)	26	26
Operating temperature (°C)	-20° ÷ +55°C	-20° ÷ +55°C
Storage temperature (°C)*	-25 ÷ +70	-25 ÷ +70
Protection rating (IP)	65	65
Frequency (MHz)	433,92	868,35
Average life (cycles)**	100000	100000

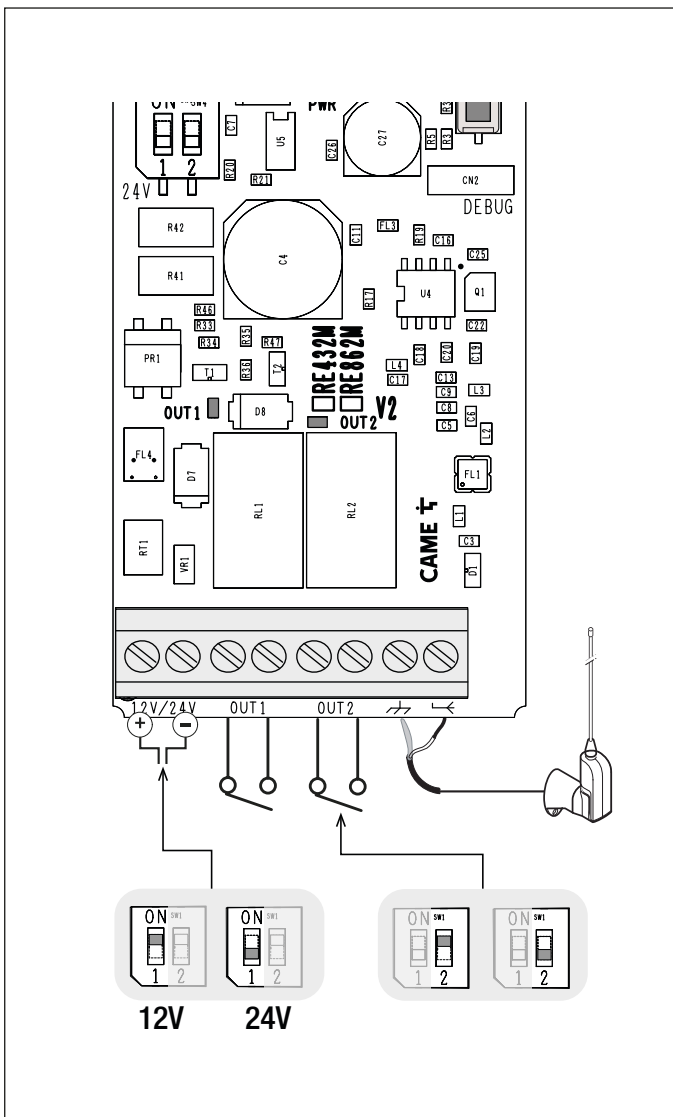
(*) Before installing the product, keep it at room temperature where it has previously been stored or transported at a very high or very low temperature.

(**) The average product life is a purely indicative estimate. It applies to compliant usage, installation and maintenance conditions. It is also influenced by other factors, such as climatic and environmental conditions.





ELECTRICAL CONNECTIONS



DIP-switch operation

DIP-switch 1	Receiver power supply
DIP-switch 1 set to OFF	Power supply 24 AC/DC
DIP-switch 1 set to ON	Power supply 12 AC/DC
DIP-switch 2	OUT2 relay mode
DIP-switch 2 set to OFF	Monostable = when a valid code is received, the relay activates for 1s and then deactivates.
DIP-switch 2 set to ON	Bistable = when a valid code is received, the relay changes status.

Change the OUT2 contact status

- Remove the memory roll 1 from the connector before programming as follows.
- Press and hold the **OUT2** button until the warning LED 1 runs the following sequence:
 - off for 5 seconds > flashes for 5 seconds > off.
- Release the **OUT2** button when the LED switches off. The contact changes status from N.O. to N.C. or vice versa.
- The relay is factory set to N.O.
- The N.C. status is not maintained when there is no power supply.
- The OUT1 output only works in MONOSTABLE mode (N.C.) while OUT2 can operate in MONOSTABLE/BISTABLE mode and N.C./N.O.

Selecting the remote control type

The receiver accepts all types of transmitter indicated in the description. Follow the steps below to change the model of remote controls that can be stored.

Press and hold the **CLEAR** ④ button until the warning LED ① completes the following sequence:

- flash for 5 seconds > off for 5 seconds > on for 2 seconds > flash.

Release the **CLEAR** button while the LED is flashing.

- Press the **OUT1** ② button to store Rolling Code remote controls only.
- Press the **OUT2** ③ button to store TW Key Block remote controls only.
- Press the **CLEAR** ④ button to store all remote controls.

Check the type of remote control that can be stored

To view the type of configurable remote control, press the **CLEAR** ④ button for 1 second.

The warning LED ① flashes:

- Once – the receiver accepts all transmitters
- Twice – the receiver only accepts Rolling Code transmitters
- Three times – the receiver only accepts TW Key Block transmitters.

Storing a new remote control

Press one of the channel buttons (**OUT1** ② / **OUT2** ③) or both at the same time to save the remote control.

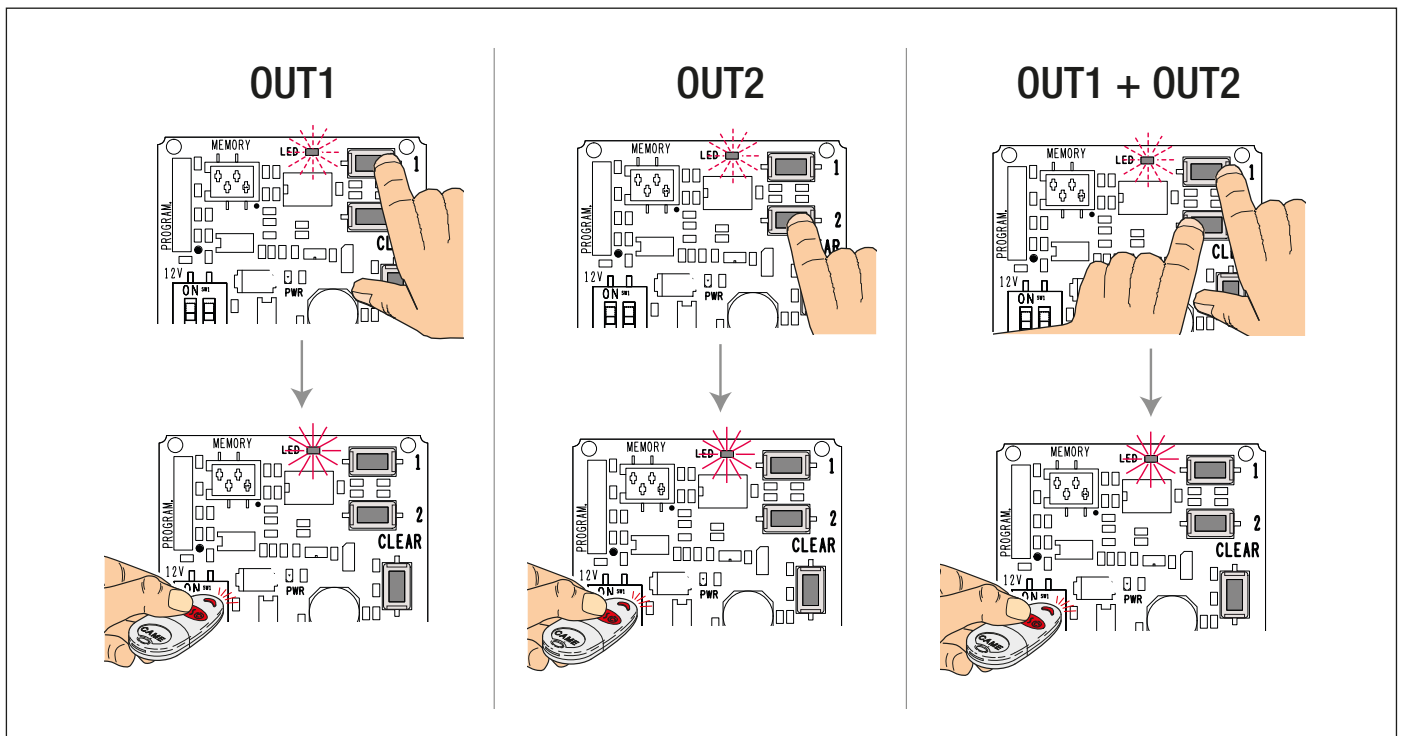
The warning LED ① flashes to indicate that it is waiting to receive the new codes from the remote controls.

Press the buttons on the transmitters to be stored one after another. The warning LED will light up briefly each time you press the button, to confirm the transmitter has been stored.

📖 During this phase, you can change the storage channel by pressing one of the buttons (**OUT1** / **OUT2**) without exiting programming. Then press the buttons on the transmitters to be stored to the new preselected channel.

To end the storage procedure, wait for the warning LED to switch off or press the **CLEAR** button ④.

📖 Up to 250 transmitters can be saved. When the memory is full, the warning LED flashes quickly.



Deleting a single remote control

Press and hold the **CLEAR** ④ button until the warning LED ① flashes for 5 seconds and then switches off.

Release the **CLEAR** button while the LED is off. The LED will start flashing slowly while waiting for the code of the remote control to be deleted.

Press the button on the transmitter you want to delete.

The warning LED ① lights up to confirm deletion.

Deleting all saved remote controls

Press and hold the **CLEAR** ④ button until the warning LED ① completes the following sequence:

flash for 5 seconds > off for 5 seconds > on for 2 seconds > flash > off.

Release the **CLEAR** button while the LED is off.

All the stored remote controls have been deleted.

Saving and loading data

You can load or save certain settings (decode, Self-Learning Rolling Code, OUT2 contact status and users) from/to the memory roll using this procedure.

Insert the memory roll **1** into the connector **7**.

⚠ Disconnect the mains power supply before connecting the memory roll card.

- Press and hold the **OUT2** **3** button to save the receiver codes to the memory roll.

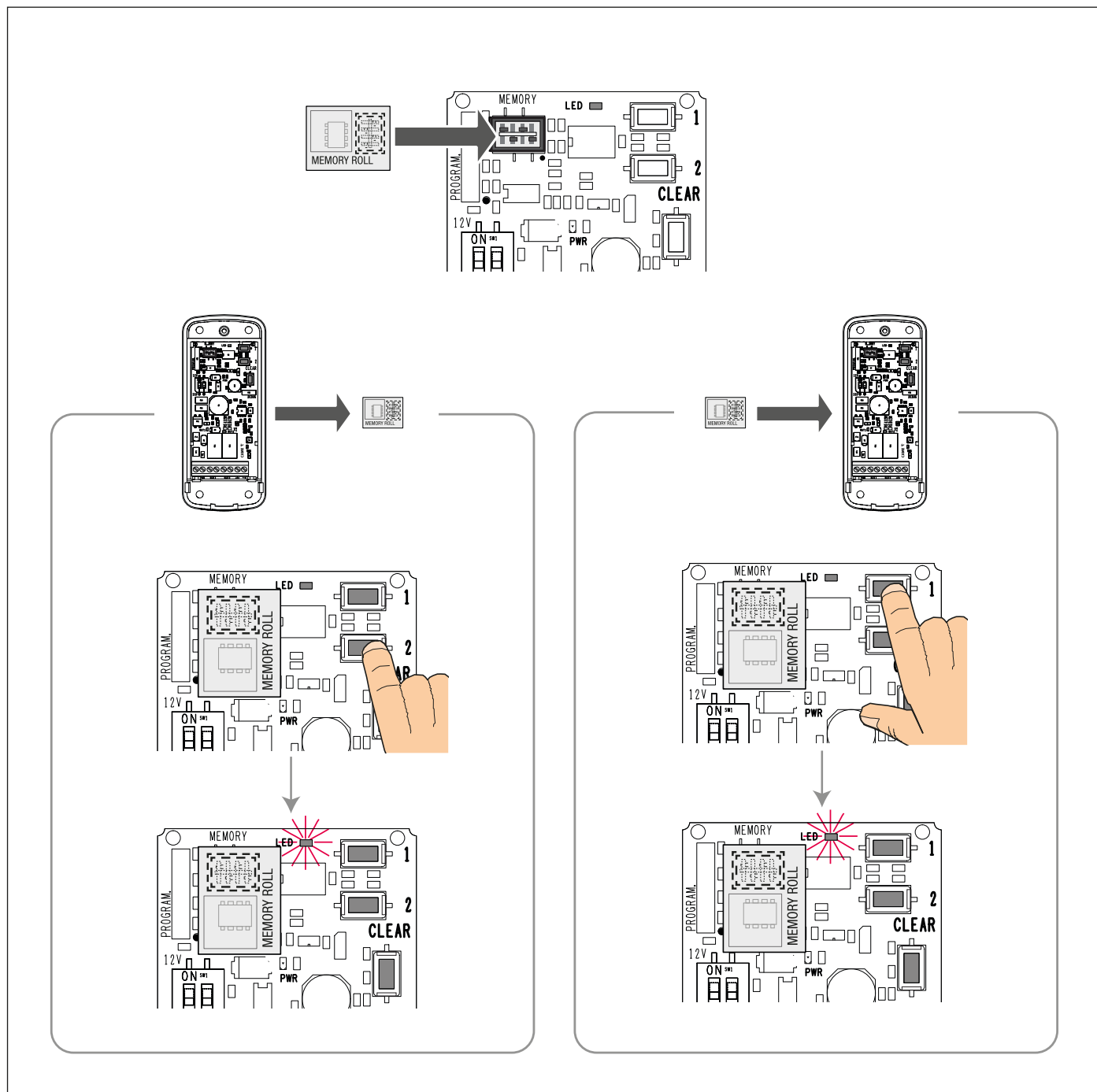
After a few seconds, the warning LED lights up and then switches off. Release the button.

- Press and hold the **OUT1** **2** button to load the codes from the memory roll onto the receiver.

After a few seconds, the warning LED lights up and then switches off. Release the button.

If, when pressing and holding the **OUT1** **2** button, the LED flashes three times after 5 seconds, the device has encountered an error reading the Memory Roll. Check the Memory Roll is correctly inserted and not damaged.

📖 You can import data from a memory roll stored with RE432M V1 on RE432 V2, but not vice versa.



Self-Learning Rolling function

Self-Learning Rolling allows you to save a new rolling code transmitter via a rolling code transmitter that has already been stored.

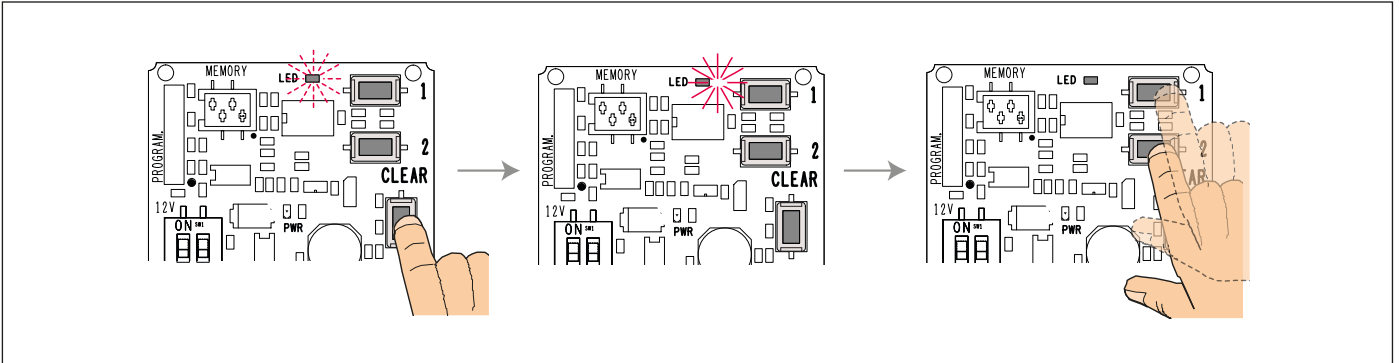
Press and hold the **CLEAR** ④ button until the warning LED ① completes the following sequence:

- flash for 5 seconds > off for 5 seconds > on.

Release the **CLEAR** button when the warning LED lights up and remains on.

- Press the **OUT2** ② button to activate the self-learn rolling code.
- Press the **OUT1** ③ button to deactivate the self-learn rolling code.

The LED then switches off to signal the end of the procedure.



Viewing function status

Press and hold the **CLEAR** ④ button until the warning LED ① completes the following sequence:

- flash for 5 seconds > off for 5 seconds > on.

Press **CLEAR** ④.

- LED ① flashes once = Self-learn rolling code deactivated.
- LED ① flashes twice = Self-learn rolling code active.

Restore preset settings

You can use this function to delete all users and restore the following parameters to factory settings: Self-Learning Rolling, type of remote controls managed, OUT2 output status.

Press and hold the **CLEAR** ④ button.

The warning LED ① completes the following sequence: flash for 5 seconds > off for 5 seconds > on for 2 seconds > flash > off.

Continue to hold the **CLEAR** button down even after the LED has switched off, for at least 5 seconds.

Once the settings have been restored, the warning LED ① flashes once.



CAME.COM

CAME S.P.A.

Via Martiri della Libertà, 15

31030 Dosson di Casier

Treviso - Italy

Tel. (+39) 0422 4940

Fax (+39) 0422 4941

info@came.com - www.came.com